

## Stock Tubes: Proudly PCR Plastic



At Quadpack, as a B Corp company, we are committed to sustainable packaging solutions. Our stock tubes are now composed of PCR (post-consumer recycled) plastic, which gives a second life to plastic materials and helps reduce carbon footprint.

### Layers Specification:

1. Inner Layer: Virgin PE to maximize compatibility and sealing performance.
2. Middle Layer: EVOH, a barrier that helps preserve your formula's integrity.
3. Outer Layer & Tube Head: Mix of virgin and recycled PE.
4. Cap: Virgin PP (polypropylene)

### Certification & Quality Assurance

Certified FDA PCR raw materials.

### Performance / Sealing

The inner layer are made of virgin PE to maintain same sealing parameter.

### Advantages for Your Brand

1. No compromise on performance and compatibility
2. Environmentally-friendly packaging solution
3. Compliance with growing sustainability demands from consumers and regulators

### Inherent to PCR Process

The use of PCR plastic (FDA approved) may sometimes lead to the appearance of small black dots on our tubes. This is attributed to the presence of black plastic granulate in the recycled material. Despite our best efforts to minimize this, it can sometimes occur due to the current recycling stream.

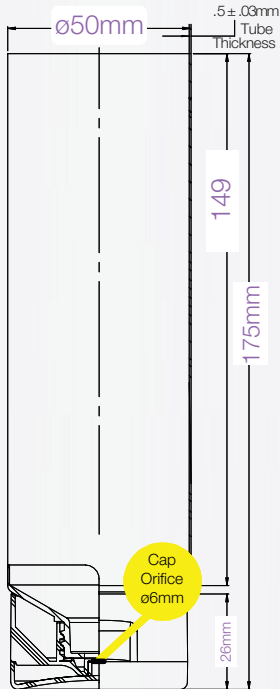


## PACK CODE 6oz White Tube

## PACK TYPE Tubes

## CATEGORY Skincare

DESCRIPTION	6oz White Glossy Stock Tube Option to Custom Order
BENEFITS	Formula protection (EVOH Barrier) 25% PCR (tube sleeve + head) Easy Bottom Fill & Seal Glossy Varnish - Easy To Apply Decoration
APPLICATIONS	Hair Care, Body Care, Skin Care, Sun Care



\*Drawing scale not 1:1



### TECHNICAL SPECIFICATIONS

#### GENERAL INFORMATION

DIMENSIONS	
Tube Height (Stock)	149mm
Total Height (Stock)	175mm
Diameter	ø50mm
Sleeve Thickness	0.45 +/-0.03
Head Scew	Yes
Tube Orifice	5mm
Cap Orifice	6mm

#### MANUFACTURING & PACKING

PRODUCTION & SHIPPING	
Lead time (Stock)	2-3 days
MOQ Instockpack	1 case
MOQ	5k
MOQ Decorated Tube	10k 2 SKUs
Plant location	North America

#### PACKING SPECS

CTN SIZE L20" x W13" x H15"	QTY/CTN 134
G.W. (KG) 3.21	N.W. (KG) 4.33

#### MATERIALS

Cap	Virgin PP
Head	40% PCR PE
Top Seal	PE/AL
Tube	5-Layer CO-EX EVOH
Inner	Virgin PE
Outer Layer	45% PCR PE
Tube 5-Layer	(LDPE)

#### HOT AIR SEALING RECOMMENDATION

- Temperature range: 300° - 450°C
- Speed: 35-50 tubes per minute.
- Air pressure: 0.5 bar

\*Conditions may vary depending on the machine model.

#### CAPACITY

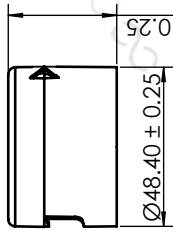
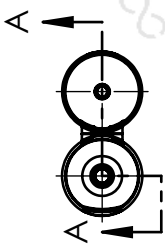
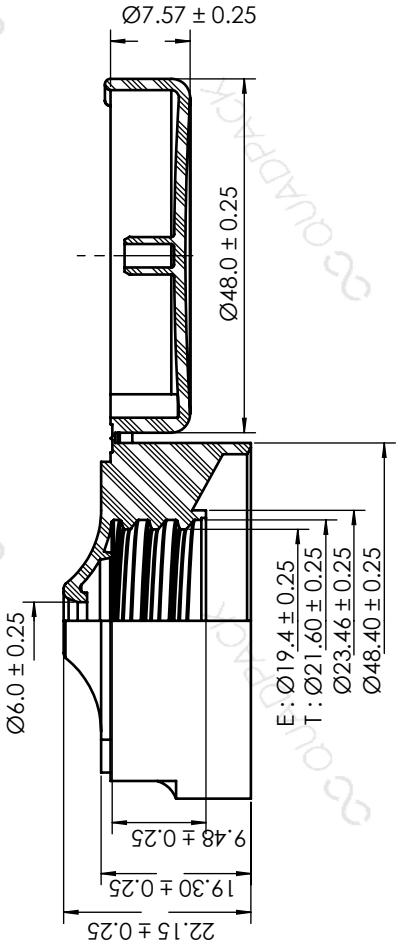
Declared	6oz
----------	-----

#### DECO OPTIONS

- Tube
- Silk Screen • Hot Stamping
  - Labeling • Heat Transfer

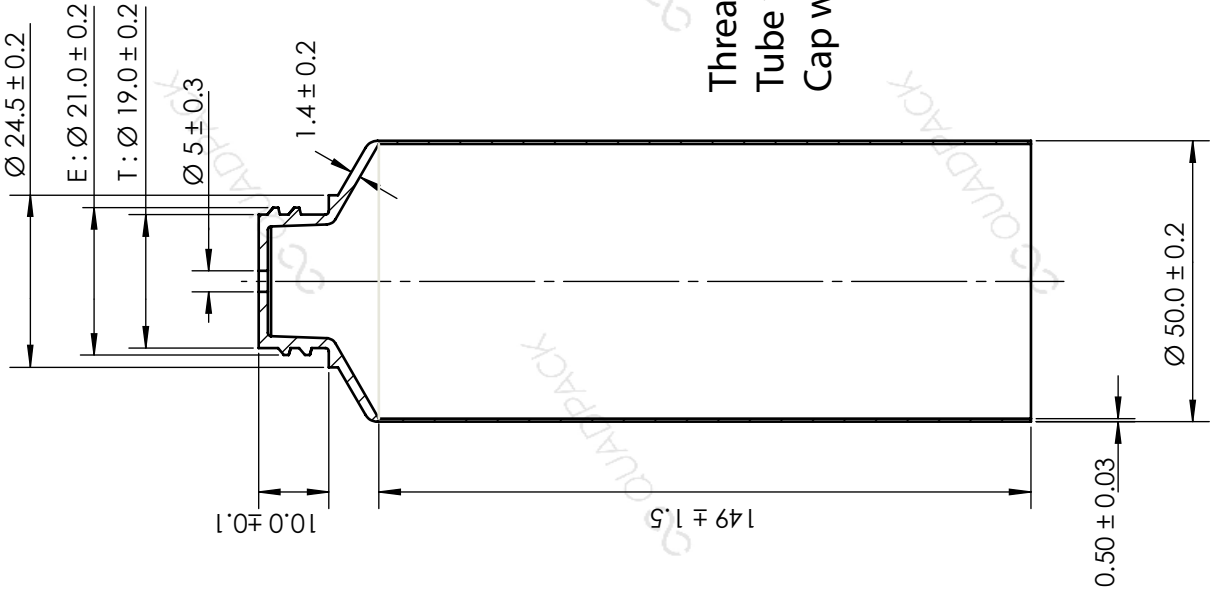
PRODUCT DATA SHEET

June 2023



SECTION A-A

Thread Pitch : 3.0  
Tube weight :  $14.90 \pm 1$  g  
Cap weight :  $9.13 \pm 0.5$  g



\*DRAWING NOT TO SCALE